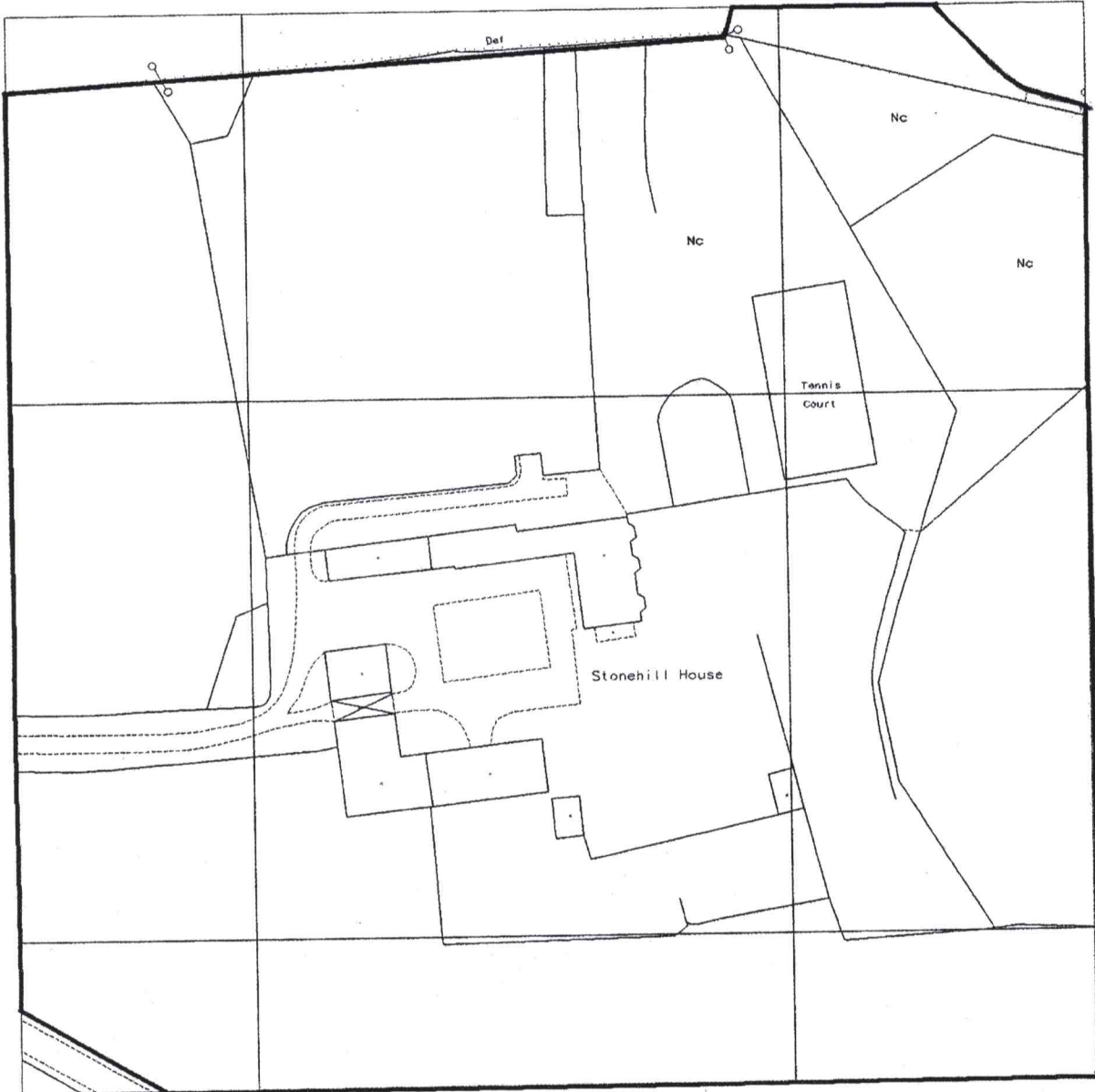




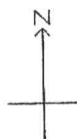
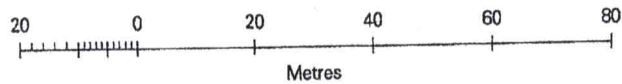
DPA/14126/20



Produced 07 Jun 2005 from Ordnance Survey digital data and incorporating surveyed revision available at this date. © Crown Copyright 2005.

Reproduction in whole or in part is prohibited without the prior permission of Ordnance Survey.

Ordnance Survey and the OS symbol are registered trade marks and Siteplan a trade mark of Ordnance Survey, the national mapping agency of Great Britain.



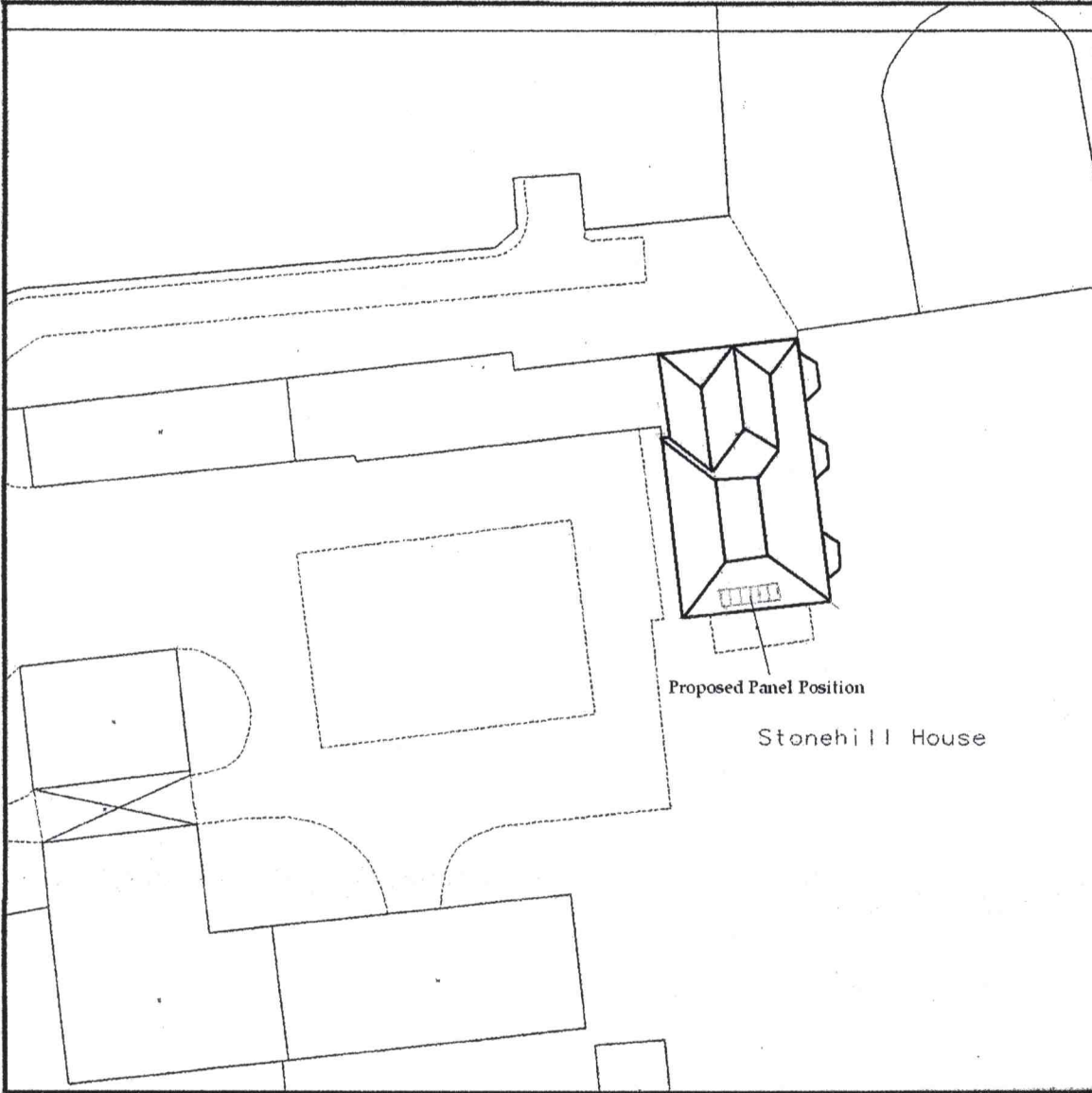
Centre Coordinates: 448656 195572

National Grid sheet reference at centre of this Siteplan: SU4895NE

Supplied by: Gormans  
Serial Number: 01295100

Drawing No 40/E NC23779W/03

DRA/14126/20

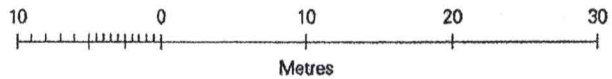


Produced 07 Jun 2005 from Ordnance Survey digital data and incorporating surveyed revision available at this date. © Crown Copyright 2005.

Reproduction in whole or in part is prohibited without the prior permission of Ordnance Survey.

Ordnance Survey and the OS symbol are registered trade marks and Siteplan a trade mark of Ordnance Survey, the national mapping agency of Great Britain.

Part or all of this Siteplan is enlarged from mapping produced at one or more of the following scales 1:1250, 1:2500, 1:10000.



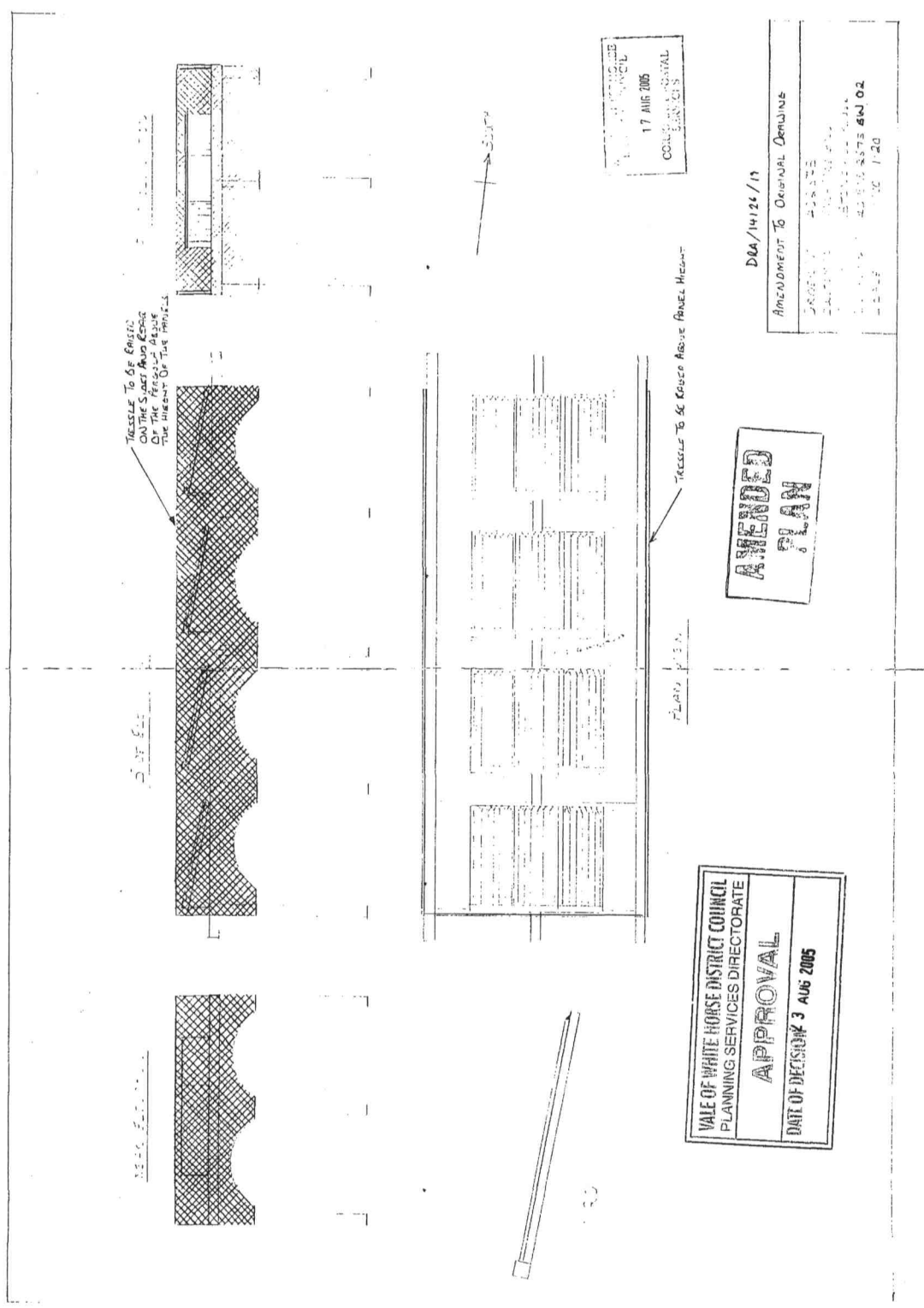
Centre Coordinates: 448652 195562

National Grid sheet reference at centre of this Siteplan: SU4895NE

Supplied by: Gormans  
Serial Number: 01295300

Drawing No 40/ENC 00524/02





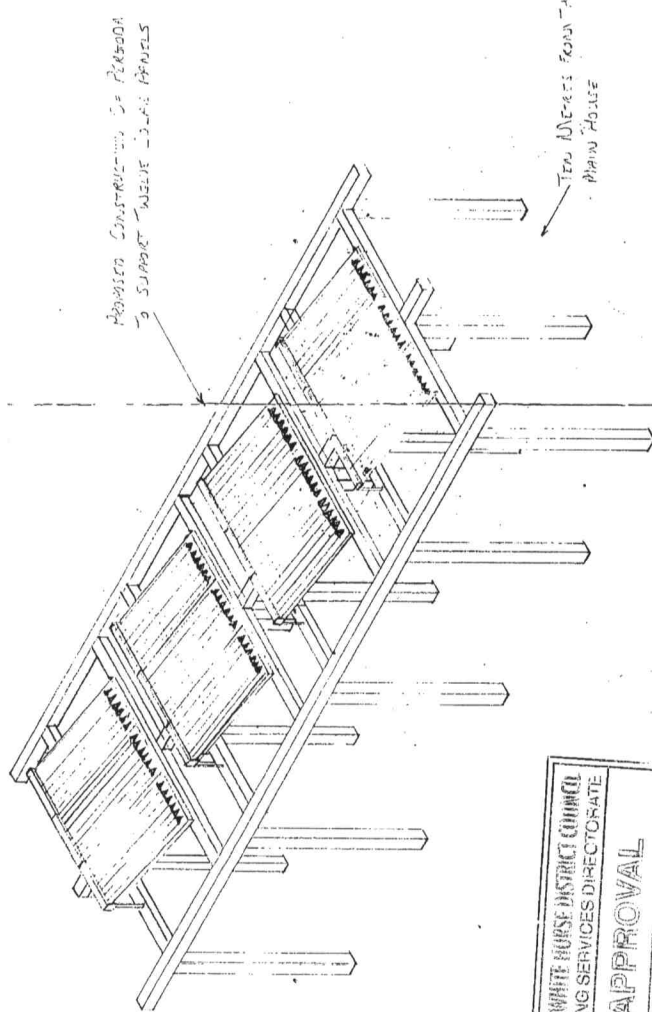
VALE OF WHITE HORSE DISTRICT COUNCIL  
 17 AUG 2005  
 COLLEGE HOSPITAL  
 LEASING  
 1:20

DBA/14126/11

AMENDMENT TO ORIGINAL DEMANDS	
PROJECT NO.	438347
DATE	17 AUG 2005
BY	ASST. DIR. PLANNING
FOR	ASST. DIR. PLANNING
APPROVED BY	ASST. DIR. PLANNING
DATE	17 AUG 2005

**APPROVED PLAN**

VALE OF WHITE HORSE DISTRICT COUNCIL  
 PLANNING SERVICES DIRECTORATE  
**APPROVAL**  
 DATE OF DECISION 3 AUG 2005



7 8 JUL 17 05  
 CORP. S. 1000 011

ORDER # 406375  
 CUSTOMER MR. & MRS. F. J. J.  
 PROPERTY SPANISH LA PALMS  
 DRAWING NO. 40 800 2575 6W 02  
 SCALE 1:50

DRA/14126/19

VALE OF WHITE HORSE DISTRICT COUNCIL  
 PLANNING SERVICES DIRECTORATE  
**APPROVAL**  
 DATE OF DECISION 23 AUG 2005

C. R. GOODA

